

# EMERGENCY SHUT OFF VALVES

## MODEL 06240FS DESIGNED FOR LPG STORAGE SAFETY

### Description

Hydraulically operated Fail-Safe Valve  
Valve size: from 8" to 14".

This valve will close automatically in case of Emergency situations:  
Fire, Power Failure, Earthquake, emergency shutdown.

### Benefits

Designed to maintain your LPG storage safe.

- Low maintenance required
- High durability
- Easy to handle
- Quick shut-off
- Full Gas tight sealing after shut-off

### Hydraulic Control

Manually or automatically controlled through Svanehøj hydraulic control systems: 5999 or 6999 panels.

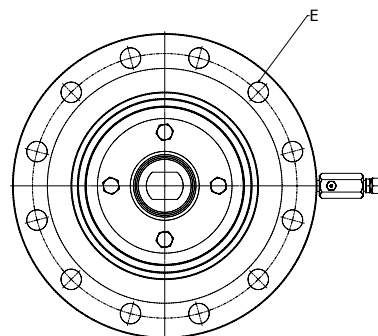
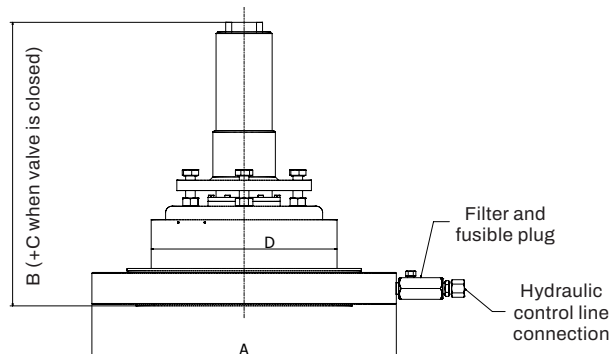
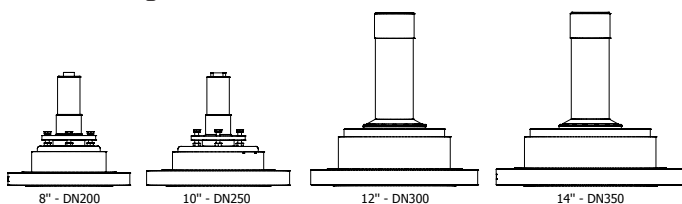
### Standard Materials

Low temperature carbon steel  
ASTM A350 LF2  
Gaskets: Nitrille, Klingner C-4430.



### Typical application

Designed for LPG Tank Storage Safety.  
Can be installed on any type of external storage.



### Certifications

#### Fire safe

API 607 & ISO 10497

#### CE:

- PED 2014/68/EU

#### Designed according to:

- ASME VIII Div 2
- Flange: RF#300 LBS

**Pressure Service:** up to 20 bar

**Temperature service**

**range:** -20 C°/85 C°

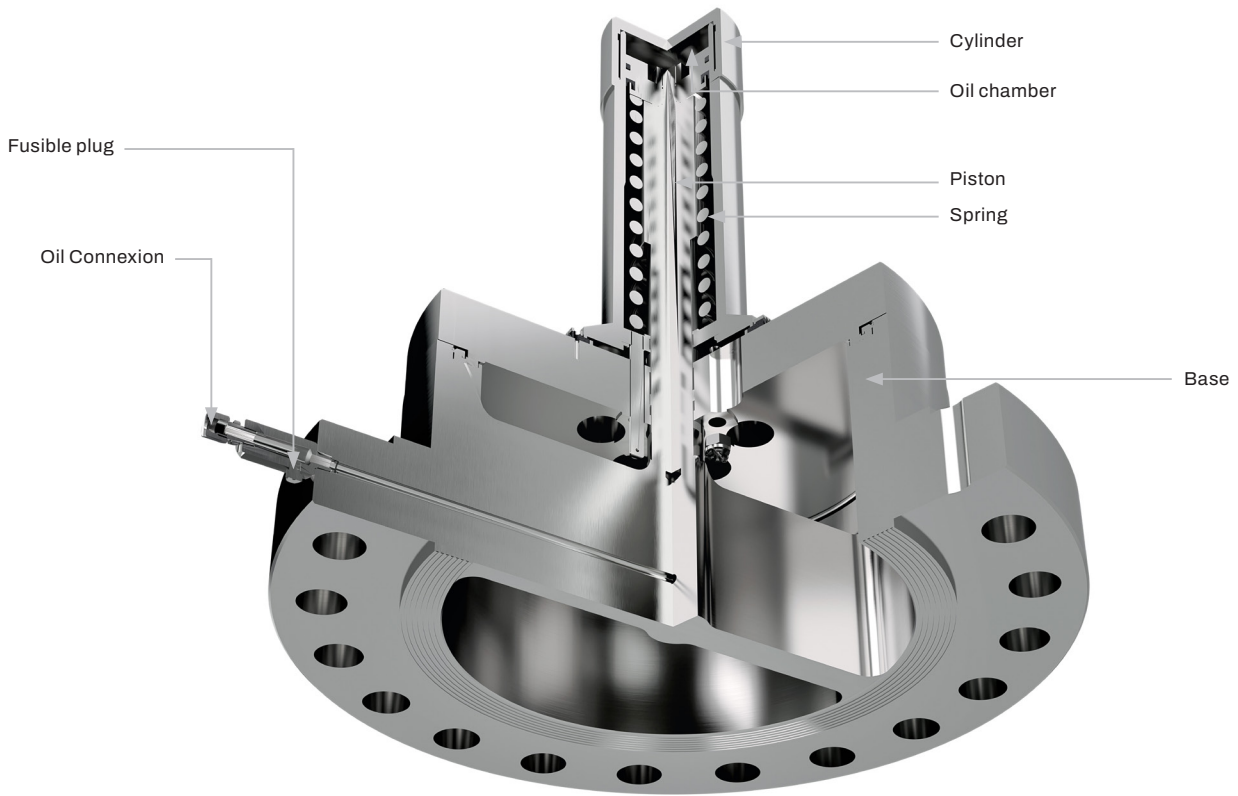
### Compatibility:

- LPG: Butane / Propane
- Isobutane
- Isobutene / Isobutylene
- Amonia
- Ethyl chloride
- Ethylene Oxide
- Vinyl Chloride
- Dimethyl Ether
- Liquid Vinyl Chloride
- Methyl Mercaptan

Other compatible medium,  
on demand.

### DESIGN DATA

Flange ANSI 300#	Dimensions / mm					Weight (Lbs / Kg)
Size	A	D	C	B	E	
8"	Ø380	Ø232	60	353	12 x Ø25 x Ø330.2	79Lbs/36 kg
10"	Ø444	Ø284	60	353	16 x Ø28.5 x Ø387.4	128Lbs/58 kg
12"	Ø520	Ø349	95	542	16 x Ø31.8 x Ø450.8	190Lbs/86 kg
14"	Ø585	Ø410	95	542	20 x Ø32 x Ø514.4	230Lbs/105 kg



Specific flow rates, pressure losses and mechanical resistance are available on request.  
**TESTING:** all our valves are individually tested for pressure resistance at 45bar and sealing full gas tight

## INSTALLATIONS OPTIONS

### Internal



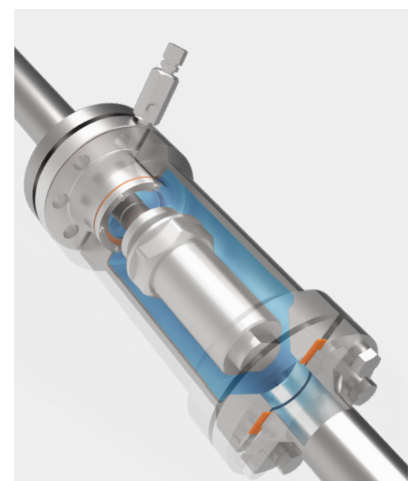
100% inside the tank.

### External



Fixed from outside with large part of the valve in the tank.

### Inline, in housing



Installed fully outside the tank, mounted on the pipe with a housing.