

Powerful performance in compact design

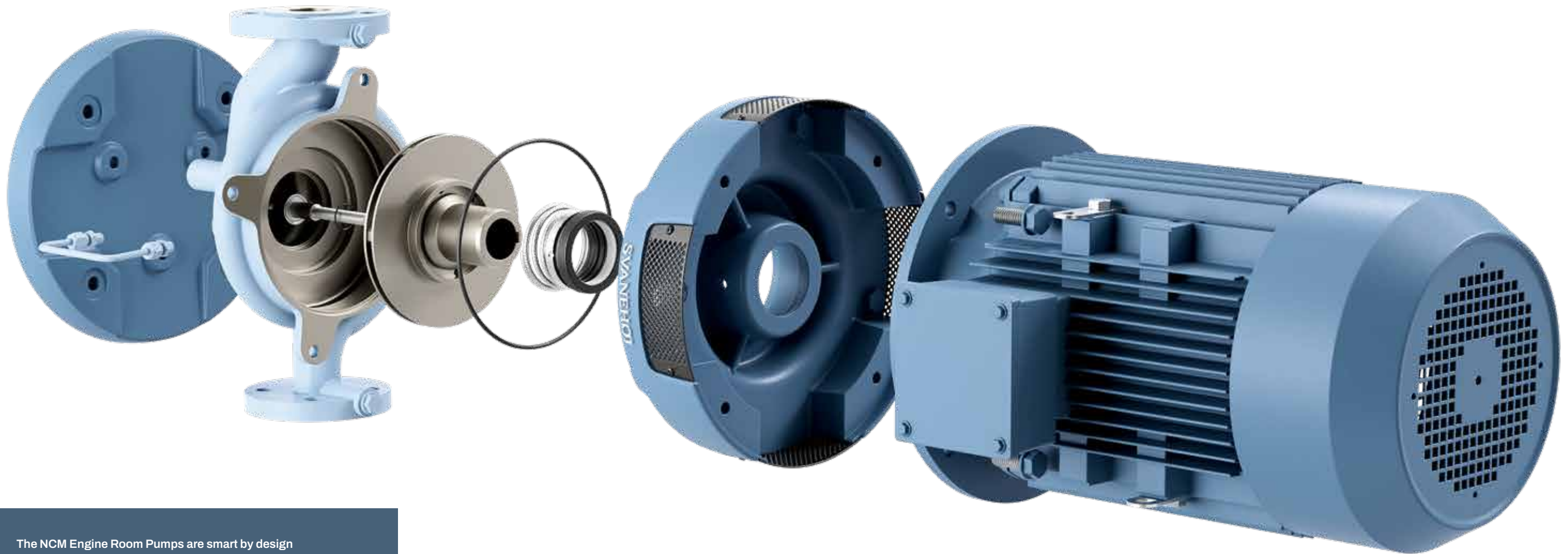
New NCM Engine
Room Pump Series



SVANEHØJ
— An ITT Company

Small in size Big on performance

Svanehoj has produced engine room pumps for the marine industry for decades – and with good reason: they are as reliable and powerful as they come. But in line with our strong tradition of innovation, we have now introduced a complete redesign.



The NCM Engine Room Pumps are smart by design

- The new designs are at least 15% lighter than the existing available pumps in the market without compromising reliability.
- With fewer components than comparable models, they are faster to assemble, disassemble, and maintain.
- With only one wear part – the mechanical seal – both downtime and spare parts inventory are significantly reduced.

The new NCM Engine Room Pump Series

From start to finish we have been driven by the idea of reduction and simplification: To design the markets most versatile, compact, and powerful series of engine room pumps.

Designed for efficiency and versatility

Using state-of-the-art tools such as CFD, FEM, and advanced optimization software, we've also optimized hydraulics to achieve exceptional efficiency across a broad spectrum of duty points – ensuring maximum performance and reliability under the most demanding conditions.

- **Fewer pump sizes needed**
The broad operating range reduces complexity in engine room planning.
- **High efficiency through advanced design**
The optimized hydraulic design delivers the highest efficiency rate in the market, meeting the growing demands for marine energy efficiency.
- **Compact and easy to maintain**
The compact design saves space, streamlines integration, and facilitates easier maintenance.

Svanehoj Singapore
15 Benoi Crescent
Singapore 629978

Tel. +65 6261 6066
sgpumpspares@svanehoj.com
svanehoj.com

SVANEHOJ
— An ITT Company